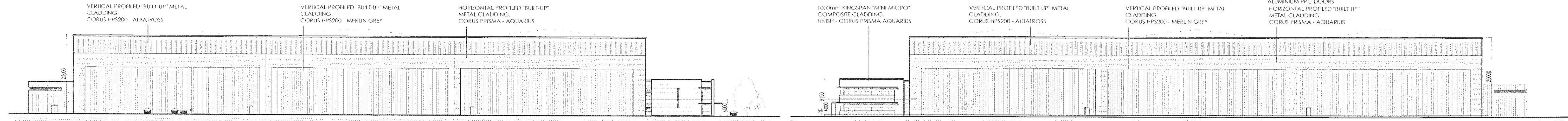
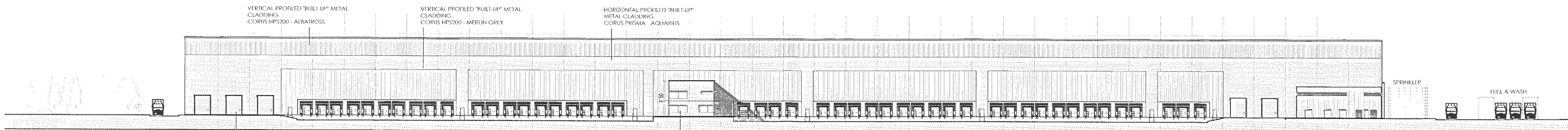


SOUTH ELEVATION

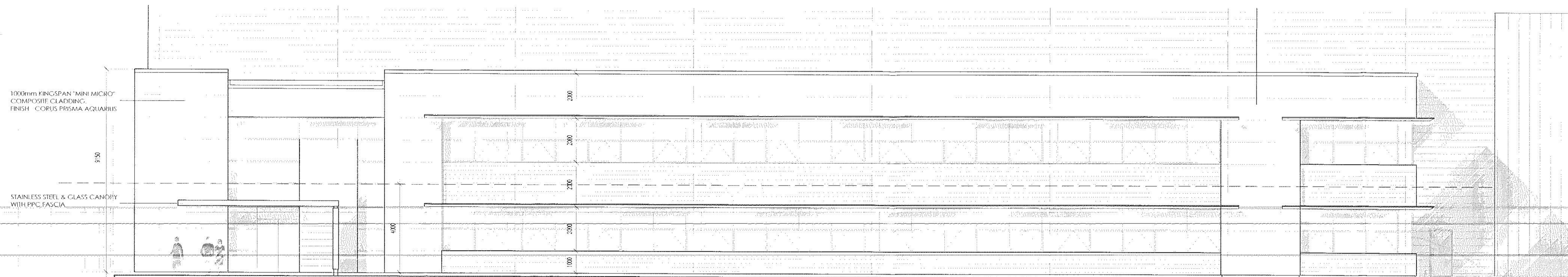


WEST ELEVATION

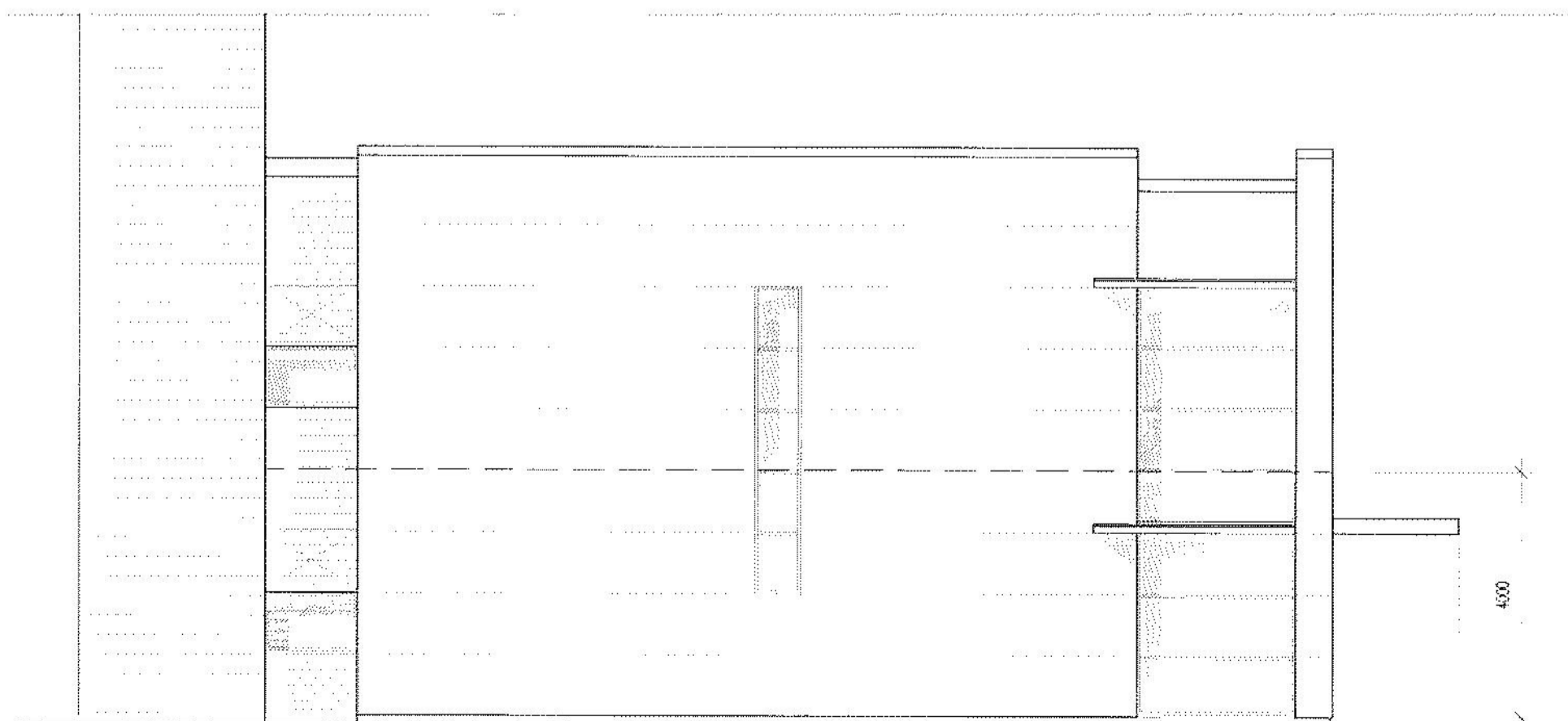
EAST ELEVATION



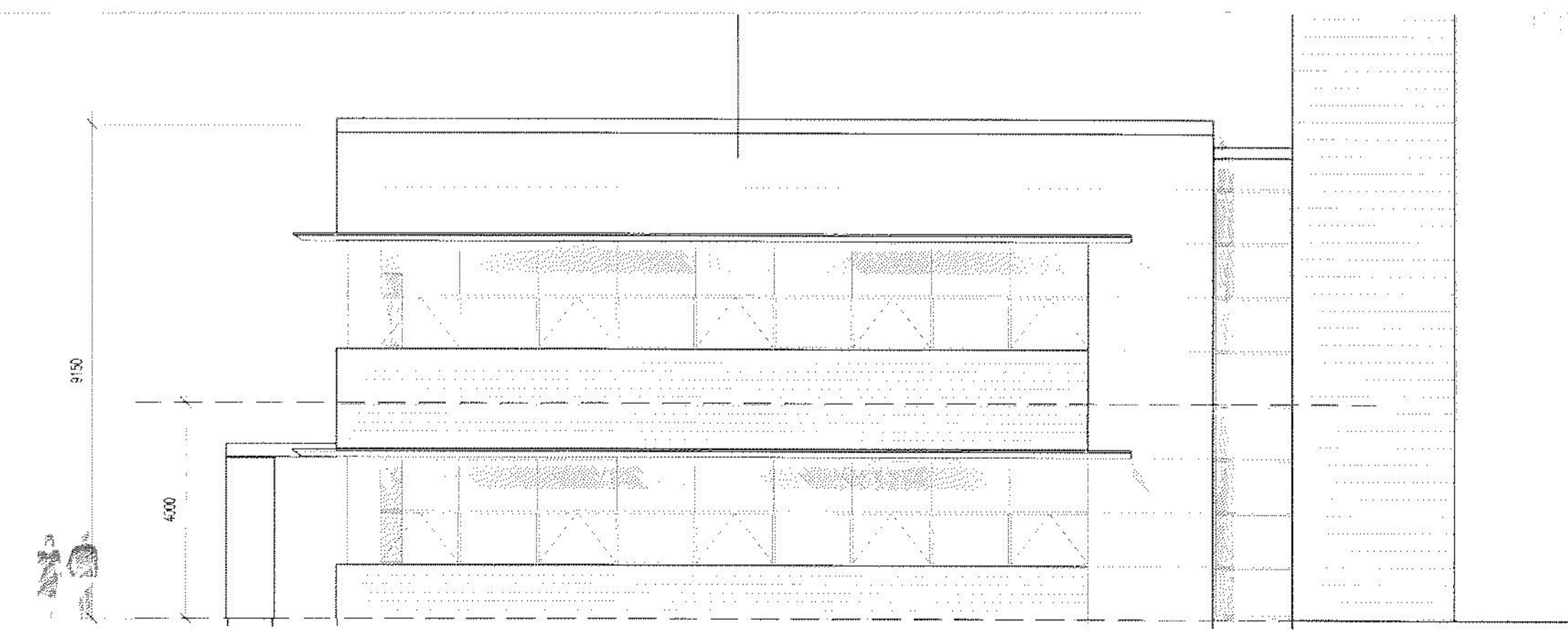
NORTH ELEVATION



OFFICE ELEVATION (SOUTH)



OFFICE ELEVATION (WEST)



OFFICE ELEVATION (EAST)

UNIT A - ELEVATIONS  
WYNYARD HS120

SCALE 1:500/100@ A1

STOCKPORT METROPOLITAN COUNCIL  
10 AUG 2007  
DATE RECEIVED

07/24/07

WYNYARD HS120  
UNIT A  
ELEVATIONS

PLANNING

A 15.05.07 DRAWINGS NOT UPDATED FROM 'PRELIMINARY' TO 'PLANNING' M3  
REV DATE DRAWN BY

FletcherArchitects  
Designers & Master Planners

UNITS 1 & 2 RIVERSIDE MEWS  
COMMERCIAL STREET  
MANCHESTER M15 4HQ  
T +44(0)161 838 5360  
F +44(0)161 838 5361  
office@fletcherarchitects.uk.com  
www.fletcherarchitects.uk.com

PROPOSED COMMERCIAL DEVELOPMENT  
for WYNYARD  
UNIT A - ELEVATIONS  
STATUS P P - PRELIMINARY I - ENR 17.01.07  
DRAWN SHP CHECKED BY 1:500/100@A1

1562 - PL07 A